

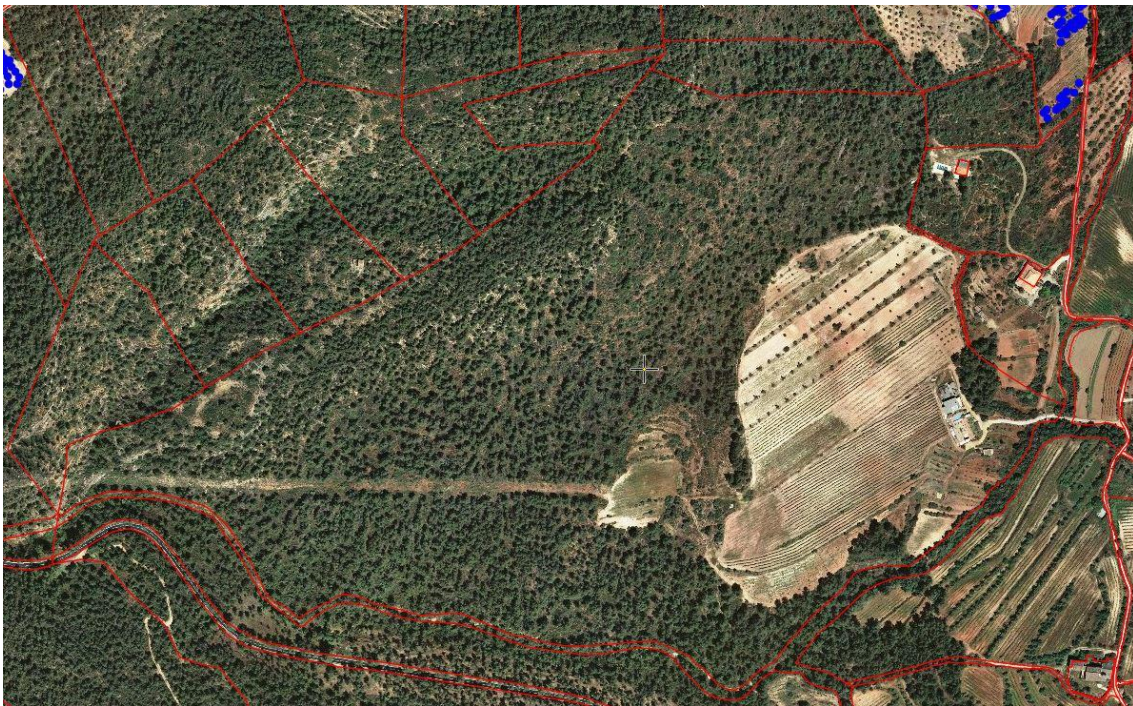
The land in Marçá

Cadastral Information

1. THE CADASTRAL REFERENCES of this land in the cadastral register of the municipality of FALSET are:
 - a. Polígono 02, Parcela 26, Municipio: MARÇÁ - TARRAGONA
 - b. Tomo 890, libro 30, folio 189, Finca número 1.664.
 - c. Registro Catastral 43077A002000260000HE

Dimensions

1. Land of approximately 300.000 square meters.



Access

1. The entrance gate with vehicular accessibility is located at the Eastern side and is accessed from a paved secondary road.
2. There are 8 pedestrian doors along the perimeter fence which fully surrounds the property.
 - a. Every door has a combination lock

Topology

1. Uneven terrain, consisting of parts of:

- a. Mountain: Mainly pine vegetation with some oaks, few almond trees and creeping vegetation.

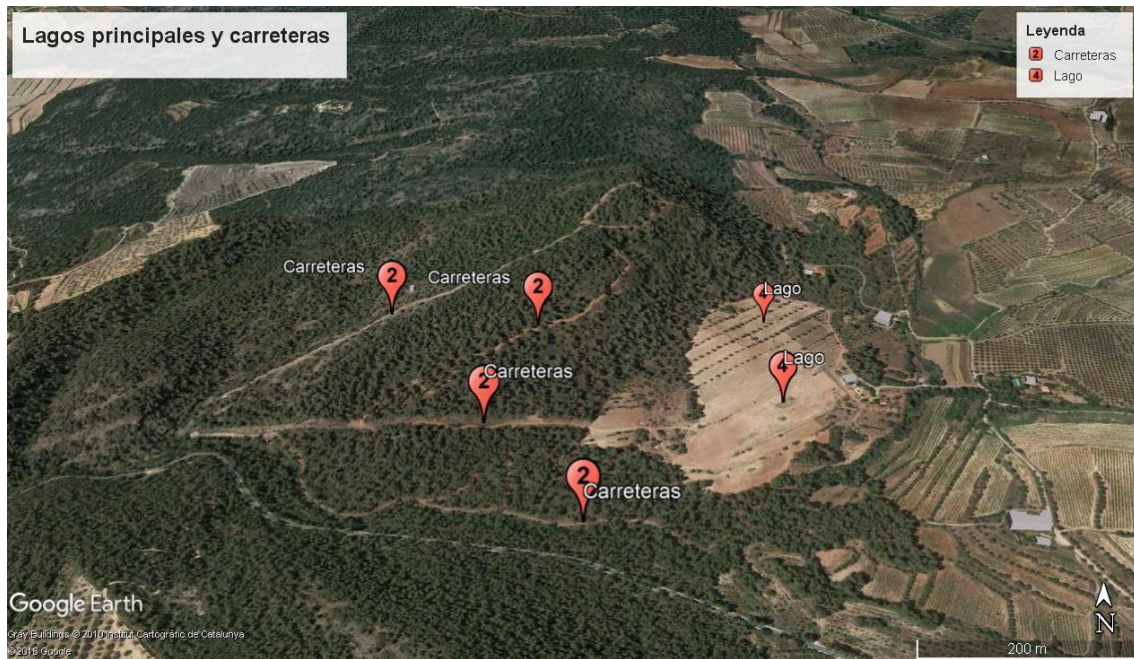


- b. Valley: About 100 productive olive trees (but neglected, without pruning) and vineyard of about 2 hectares (neglected and therefore unproductive)



2. Roads that allow access to almost the entire perimeter including the upper part of the mountain.
3. General metal fencing of 2 meters height in perfect condition with aluminum wire in the base for the function of an electric fence.

4. Artificial lake (without cement walls) of 30 meters of length with a small island in the center of the valley.
5. Artificial heart-shaped lake in the upper valley area. (lakes need to be fulfilled)



Proprietary Installations

1. Perimeter fence of 2 meters height with 8 pedestrian doors and an iron gate for vehicular access.
2. Internal vehicular access to the main house made of concrete.
3. Metal covered carport for 3 vehicles.



4. Farm tracks for interior vehicular circulation in good conditions.
5. Main house composed of kitchen, living room and bathroom in the upper level and kitchen, bathroom, three bedrooms and storage room in the lower level.



6. In the lower level, there is the machine room where the diesel engine is located for the heating system and the diesel tank with a capacity of 1000 liters.
7. The upper area has a garden with a fenced pool.



8. In the southern part, underneath the house there is a white glass door of 2m width to access an apartment with living room, small kitchen, bathroom and bedroom and also to access the warehouse of about 100 square meters closed by a large metal door.



9. There is a large air conditioning machine in the warehouse.
10. To the South of the main house there is the tool house where the water pumps, the well and the water tanks are located. Next to that there is an aviary for birds, designed with Arab arches and solid wood including two rooms for closed animals with double doors.



11. Next to the aviary there is an animal hut, closed with a double door and a rustic roof, with fencing it is creating a small park of about 60 square meters.



12. Attached to the west side of the house there is a warehouse for straw and tools with Arabic tile roof with two spaces: one open and another one with a sliding wooden door.



13. Next to the straw storage there is the completely closed wooden DOME with micro fence, whose base wall that reaches 0.50 meters under the ground is making it suitable for rodents.



14. In the center of the valley, in front of the lake with the island, there is a booth with two levels in Gothic style with the first level made of rustic stone and the second one made of wood, handcrafted and a unique aesthetic construction.



15. Four huts emulating caves are spread in the valley, two of them finished and one pending to finish.



16. To the south of the property is the septic tank, made of concrete, with about 4x4 meters of measurements and partially buried.
17. Fenced Interior Parks:
 - a. Rustic wooden fencing to the south of the main house, about 70 meters in length with a wooden vehicular gate, with a house of the dimensions 3.50 by 3.50 meters that is wooden with a double door for horses.



- b. Park with a metal fence of 2 meters height to the south of the valley, on wooden poles with a pedestrian door on its south side, with a rustic wooden house of exquisite beauty with decorated doors and windows and flower ceiling. Small artificial lake, 5 meters long, and walls made of stone and mesh.





- c. Metal fencing of 2m height in the south of the property with two metal gates at each end, about 12,000 square meters, a water trough made of stone, two wooden booths, one with doors and window and another one with walls and open doors, a puddle of about 7 meters of length with shallow depth and a house emulating a cave







- d. Fencing of 1.50m of height with a pedestrian gate and a vehicular door, located below the park to the north of the valley, with a rustic stone shed and roof of flowers, with double door and an artificial lake (without cement walls) of 5 meters of length.





- e. Rustic wooden fencing of 2.50 meters height with two metal doors in two extremities located north of the valley with about 10,000 square meters with an artificial lake (without cement walls) in the form of heart. With 4 aluminum strands for electric fencing in its inner and outer base for its internal side as well as two lines of electric fencing tapes, and in its height thus extending its height to 2.50 meters.





- f. To the north of the valley there is a double gate for vehicular access, in solid wood of 2m of height that gives access to the mountain and the valley.

